

It's time you own your health.

Starting with 100+ lab tests and insights based on your results. Every year. Just \$499.

Now FSA and HSA eligible.

21%

save



Apolipoprotein B
(cardiac risk factor)

82

mg/dL

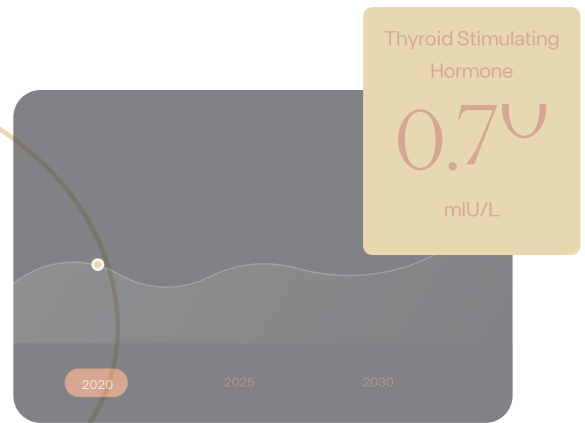
All-in-one. For everyone.

Test your whole body across 100+ biomarkers: hormones, thyroid, heart, metabolic, autoimmunity, toxins and much more.



Results tracked over your lifetime.

Always know how your body is changing. All results stored in one secure place for easy access anytime.



Function helps detect early indicators of 1000's of diseases.

• Anemia • PCOS • Lymphoma • Pancreatic Cancer • L
Chronic Kidney Disease • Mercury Toxicity • Rheumatoi
• Hyperthyroidism • Diabetes • Lupus • Gout • Sickle C

Results that make sense.

Easy to read. Easy to understand.
Function delivers evidenced-based
insights developed with the world's top
doctors.

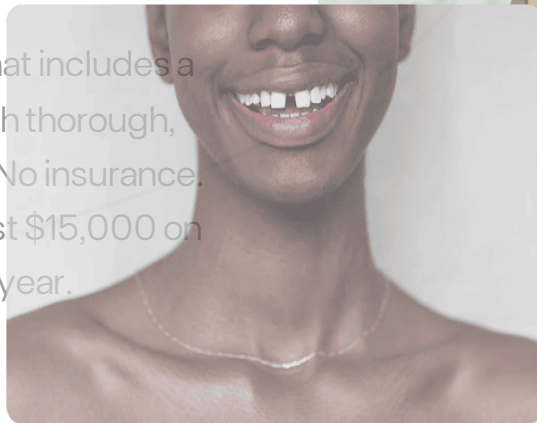
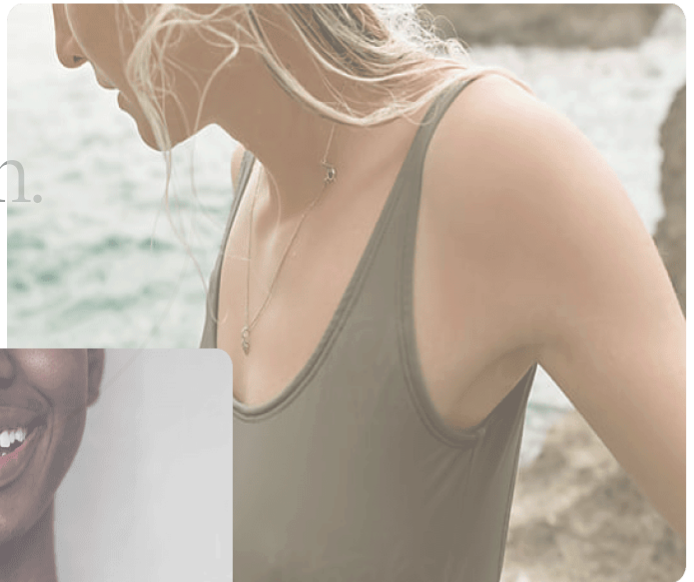


Mark Hyman, M.D.

Function co-founder and one of the
many doctors sharing insights
alongside each result.

\$15,000 on your own.
\$499 with Function.

The first membership that includes a 100+ lab test routine with thorough, personalized insights.* No insurance. No fees. What could cost \$15,000 on your own is just \$499 a year.



Function Function

Join Function

Gift Function

How it works

Tests Included

About

FAQ

Log in to Beta

Join Function

Gift Function

Contact

Member Login

How it works

Pricing

Member Benefits

About

List of tests

Practitioners

Help

Hiring

Function for Business

BY PROVIDING YOUR PHONE NUMBER, YOU AGREE TO RECEIVE TEXT MESSAGES FROM FUNCTION HEALTH. MESSAGE AND DATA RATES MAY APPLY. MESSAGE FREQUENCY VARIES.

*LAB TESTS ARE ORDERED BY CLINICIANS AT THEIR SOLE DISCRETION. COSTS OF LAB TESTS REFUNDED IF PHYSICIAN DOES NOT ORDER TEST.

FUNCTION HEALTH IS A HEALTHCARE TECHNOLOGY COMPANY AND NOT A LABORATORY OR MEDICAL PROVIDER. ALL LABORATORY AND MEDICAL SERVICES ARE PROVIDED BY INDEPENDENT THIRD PARTIES. THESE LABORATORY AND MEDICAL SERVICE PROVIDERS SET THEIR OWN PRICING. ALTHOUGH FUNCTION HEALTH MAY FACILITATE EASY ACCESS TO CERTAIN LABORATORY AND MEDICAL SERVICE PROVIDERS ON YOUR BEHALF, FUNCTION HEALTH DOES NOT RECOMMEND OR REFER YOU TO ANY HEALTHCARE PROVIDERS, AND YOU ARE FREE TO CHOOSE ANY HEALTHCARE PROVIDER AND TO CONTINUE TO USE FUNCTION HEALTH'S SERVICES. FUNCTION HEALTH DOES NOT OFFER MEDICAL ADVICE, LABORATORY SERVICES, A DIAGNOSIS, MEDICAL TREATMENT, OR ANY FORM OF MEDICAL OPINION, THROUGH OUR SERVICES OR OTHERWISE. FUNCTION HEALTH'S SERVICES ARE NOT A SUBSTITUTE FOR MEDICAL CARE, MEDICAL ADVICE, AND/OR A DETAILED DISCUSSION WITH YOUR PRIMARY CARE PHYSICIAN OR OTHER LICENSED PROVIDER. IF YOU HAVE ANY QUESTIONS REGARDING ANY LABORATORY RESULTS OR OTHER INFORMATION THAT YOU ACCESS THROUGH FUNCTION HEALTH, WE RECOMMEND THAT YOU DISCUSS THOSE QUESTIONS WITH A PRIMARY CARE PHYSICIAN OR OTHER LICENSED PROVIDER. ALL MATERIAL, INFORMATION, DATA, AND CONTENT THAT FUNCTION HEALTH PROVIDES IS STRICTLY FOR GENERAL INFORMATION PURPOSES. FUNCTION HEALTH'S MEMBERSHIP PRICING INCLUDES TECHNOLOGY AND SERVICE FEES CHARGED BY FUNCTION HEALTH, AS WELL AS ACCESS TO LIMITED PREPAID LABORATORY AND OTHER SERVICES PROVIDED BY THIRD PARTIES, AND PAID TO SUCH THIRD PARTIES ON YOUR BEHALF. ITEMIZATION OF ALL FEES ARE AVAILABLE UPON REQUEST. CERTAIN ITEMS AND SERVICES REQUIRE ADDITIONAL PAYMENT THAT ARE NOT INCLUDED IN STANDARD MEMBERSHIP PRICING. FOR OTHER IMPORTANT INFORMATION REGARDING THE SERVICES PROVIDED BY FUNCTION HEALTH, PLEASE SEE TERMS OF SERVICE.