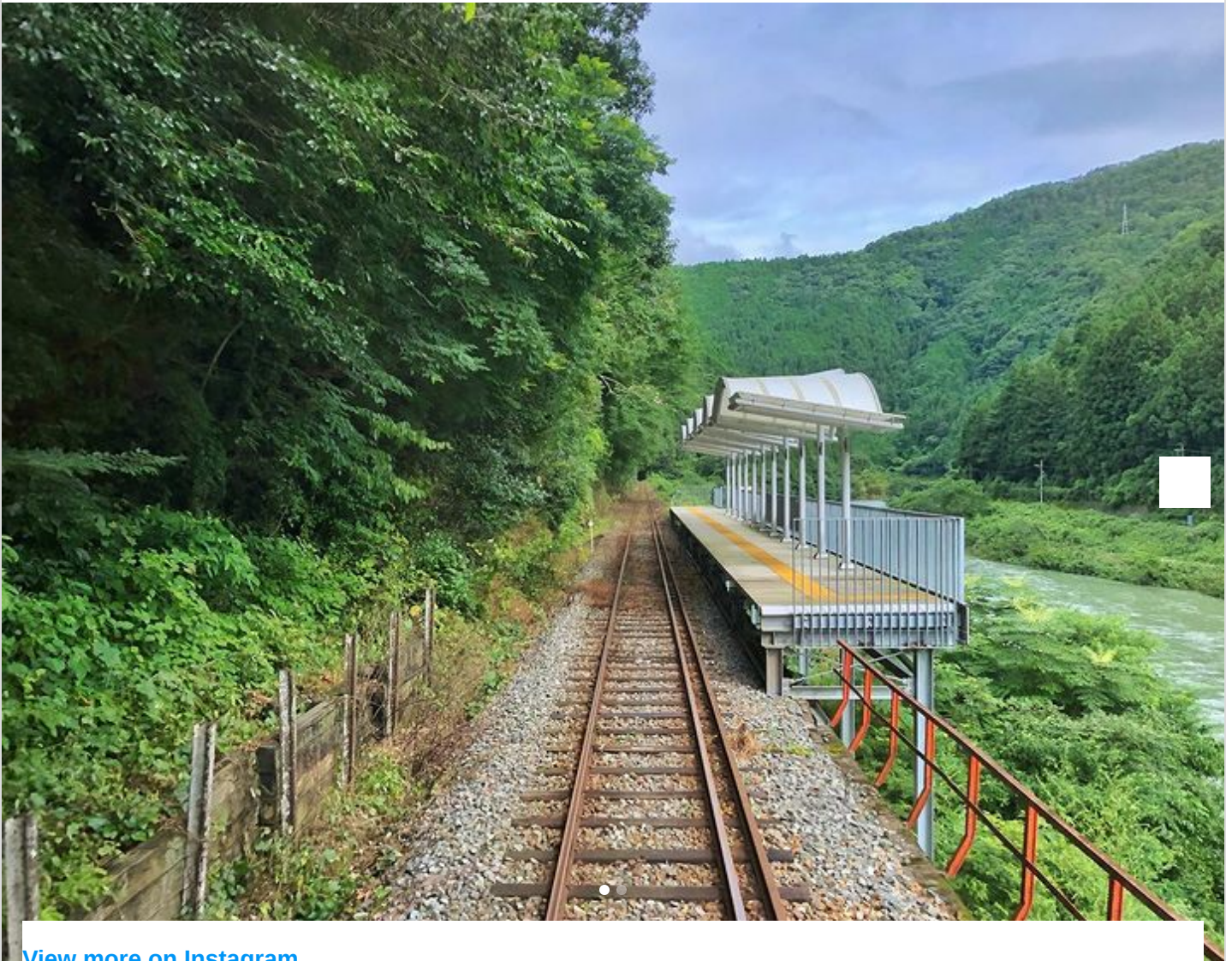


# This Unusual Japanese Train Station in the Middle of Nowhere Has No Entrance or Exit

By Margherita Cole on February 9, 2021





[View more on Instagram](#)

679 likes

Add a comment...

Sometimes we're in such a hurry to get to a destination that we forget to take in our surroundings. But that's not the case when passengers step onto the platform of the Seiryu Miharashi train station in Japan. In fact, they have no choice but to take in the view. Opened in March 2019 on the Nishikigawa Seiryu Line in the southern part of the country is an unusual platform that has no exit and no entrance. The intention of this design is to encourage travelers to take some time to admire the nature around them before they resume their journey.



Seiryu Miharashi station is situated in the Yamaguchi Prefecture between the towns of Naguwa and Nekasa. Its name literally translates to "Clear Stream Viewing Platform," referencing its position overlooking the Nishiki River. Only a few specialty trains make the stop at this unusual station, and when passengers disembark there, they will find no ramps, gates, or pathways to lead them to a destination. Seiryu Miharashi is completely isolated in the mountainous environment, so people must wait for another train to stop when they want to leave.

The highly unique nature of this station has made it a popular stop for travelers and rail enthusiasts. Those who are lucky enough to make the trip are able to get a glimpse of the untouched beauty of the region and can appreciate the time they have to slow down and spend there.

## An unusual train station has opened in the Yamaguchi Prefecture of Japan.



**aqua\_takakuri**  
□□□□

[View profile](#)

[View more on Instagram](#)

---




**219 likes**

---

Add a comment...





Located on the Nishikigawa Seiryu Line is the Seiryu Miharashi Station, which has no entrance or exit.

**Haqua**    
@Ichika\_428\_E06 · [Follow](#) 

👤  
👤...W

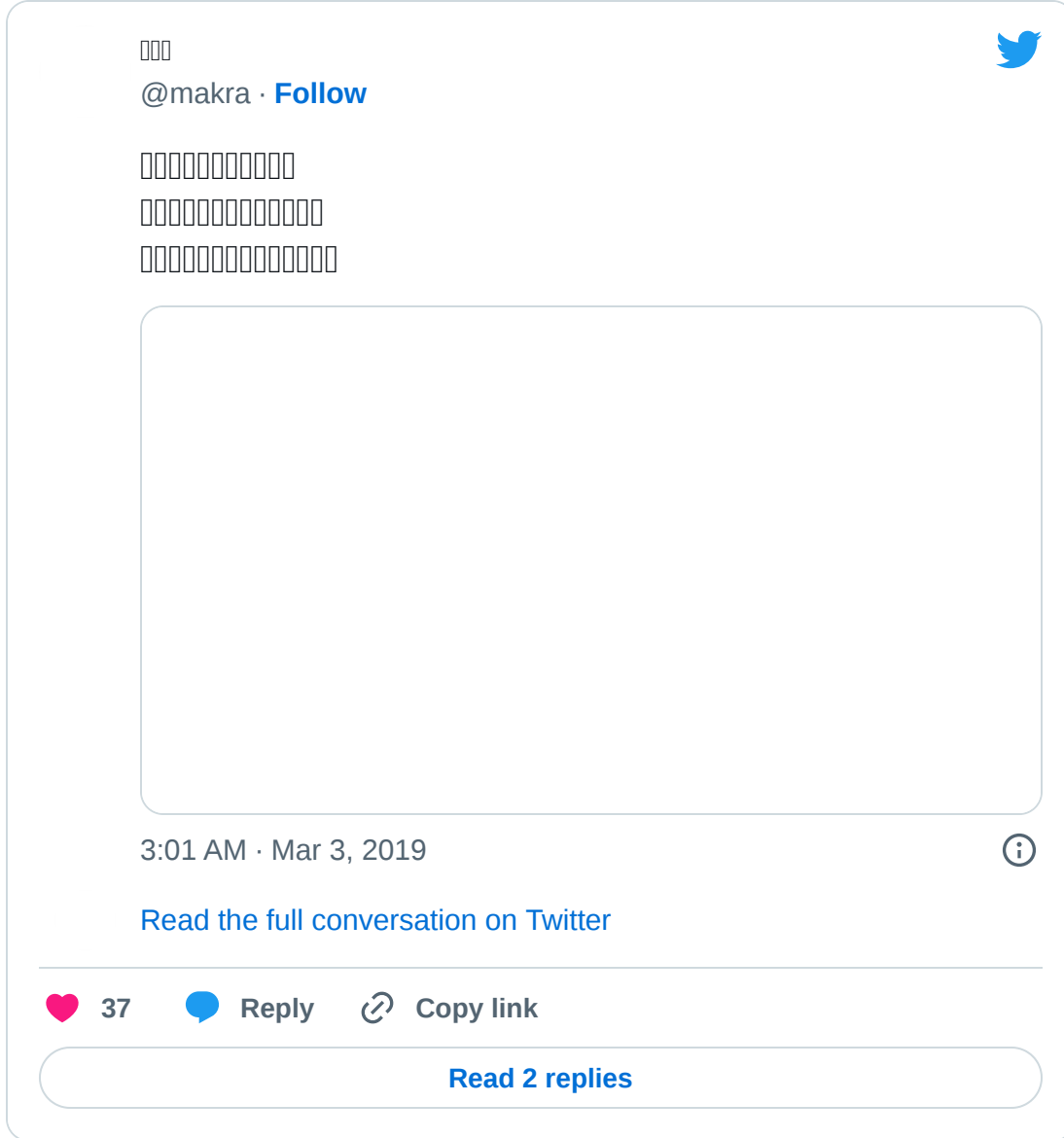
7:23 AM · Mar 11, 2019 

---

 **4.4K**  [Reply](#)  [Copy link](#)

[Read 28 replies](#)





It was created to encourage people to admire the scenery until the next train comes.

ADVERTISEMENT







kin\_tsuma\_1015  
3,050 followers

[View profile](#)



[View more on Instagram](#)

310 likes

Add a comment...

ADVERTISEMENT



# Watch this video for a better view of Seiryu Miharashi Station:

□□□□□□□□□□□□□□



ADVERTISEMENT

h/t: [\[Reddit\]](#)

## Related Articles:

[Ethereal Ice Bubbles Emerge at the Surface of a Mystical Lake in Hokkaido, Japan](#)

[Dazzling Projections Transform Iconic Japanese Garden Into an Immersive Art Installation](#)

[Japanese Village Hosts "Water Hose Festival" To Test Its Impressive Fire Extinguishing System](#)







## MARGHERITA COLE

Margherita Cole is a Contributing Writer at My Modern Met and illustrator based in Southern California. She holds a BA in Art History with a minor in Studio Art from Wofford College, and an MA in Illustration: Authorial Practice from Falmouth University in the UK. She wrote and illustrated an instructional art book about how to draw cartoons titled '[Cartooning Made Easy: Circle, Triangle, Square](#)' that was published by Walter Foster in 2022.

[Read all posts from Margherita Cole](#)

WHAT A COOL IDEA!  SHARE

LIKE MY MODERN MET ON FACEBOOK

 GET OUR WEEKLY NEWSLETTER

### BECOME A MY MODERN MET MEMBER

As a member, you'll join us in our effort to support  
the arts.

BECOME A MEMBER

[Explore member benefits](#)

GET OUR WEEKLY NEWSLETTER

FIRST NAME

EMAIL

SUBSCRIBE

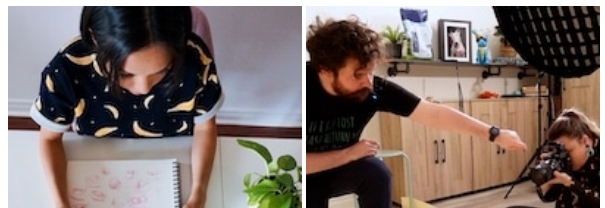
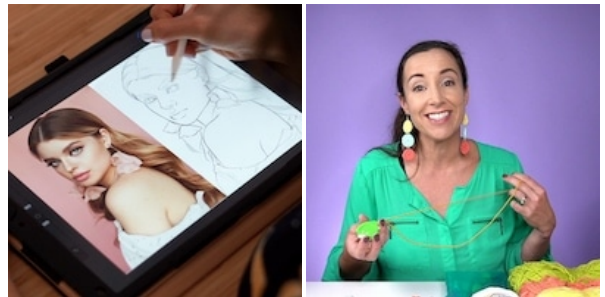
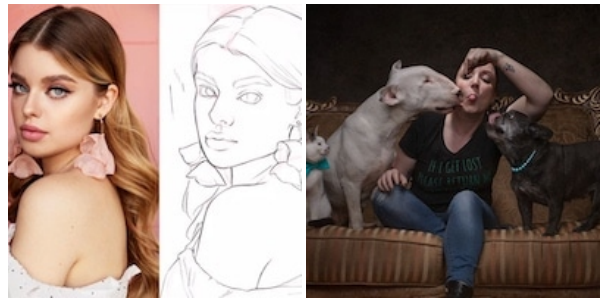




MY MODERN MET  
ACADEMY

# Learn From Top Artists

[VIEW ALL COURSES](#)



VINTAGE-  
INSPIRED BIRD  
SCARF  
*by Shovava*  
\$62.00

FRIDA KAHLO  
ACTION FIGURE  
*by Today is Art Day*  
\$29.99

BIG WOODEN CAT  
PILE GAME  
*by Comma*  
\$39.95

VIVIVA  
COLORSHEETS  
*by Viviva Colorsheets*  
\$19.95

RELATED ARTICLES

---

**The National WWII Museum Dedicates Itself to Honoring America's Role in the War**

**Traveler Wears Five Pounds of Clothing To Avoid the Extra Luggage Fees at the Airport**

**My Modern Met's Art + Culture Guide to New Orleans**

**Visit Studio BE in New Orleans for a Look at Black Art and Culture in the Big Easy**

**Towers in Doha Designed To Look Like Crossed Swords Are the Sites of Two Luxury Hotels**

**Sumptuous Boutique Hotel in India Is a Hidden-Gem Swathed in Red**

**Taiwan Has Tilted Mailboxes as a Reminder of Its Resilience and Hope**

**Breathtaking ‘Chapel of Souls’ in Portugal Is Lined With 15,947 Illustrated Tiles**

**Visit 135 Countries Aboard This Unique Cruise Ship for \$30,000 a Year**

**Discover Your Monumental Match: Which Famous Landmark Are You Most Like? [Quiz]**

**‘World Happiness Report’ Announces the  
Happiest Countries in the World**

**Futuristic Travel Trailer Swivels Open To  
Reveal a Deck for Lounging on the Road**

GET OUR WEEKLY NEWSLETTER

FIRST NAME

EMAIL

SUBSCRIBE

MY MODERN MET

Celebrating creativity and promoting a positive culture by spotlighting the best sides of humanity—from the lighthearted and fun to the thought-provoking and enlightening.

Art Design Photography Architecture DIY Career Resources Classes Environment  
Science Technology Travel Academy Store





Designed in collaboration with Electric Pulp

Information from your device can be used to personalize your ad experience.

[Do not sell or share my personal information.](#)

A RAPTIVE PARTNER SITE

